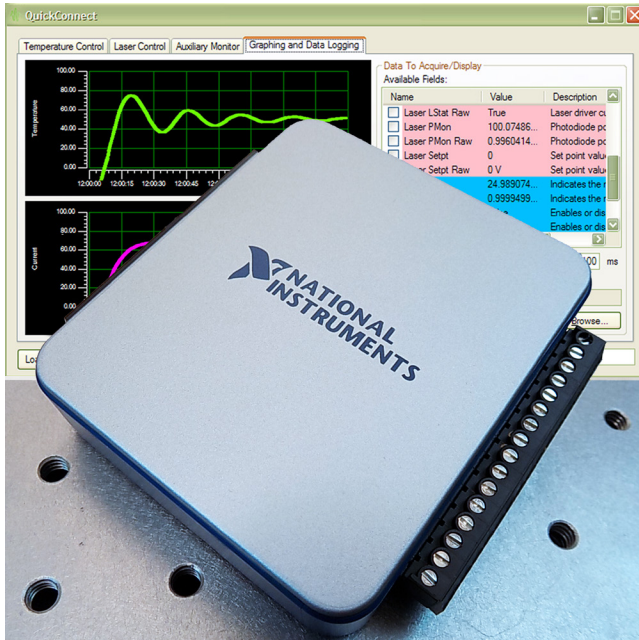


USBKIT with QuickConnect™ Software



FEATURES

- Wavelength Controller USB Interface
- QuickConnect™ software is included, and is compatible with x86 and x64 computers
- Software-configurable safety limits
- Remotely control one LD and one TC
- Graph and log data in real-time
- Save and recall multiple instrument setups
- Auxiliary differential 14-bit A/D input
- USB 2.0 Full-speed compatible
- Connect multiple USBKITS to one PC
- USB cable included
- Very affordable, and an excellent value

COMPUTERIZE THE WAVELENGTH ADVANTAGE

Expand the capabilities of your Wavelength controllers with the USBKIT and QuickConnect™ software. The USBKIT provides convenient computer control of most Wavelength chassis mount controllers and evaluation boards at a surprisingly low price.

The software provides an intuitive virtual control panel that allows you to leverage the low-noise, high-stability laser diode and temperature control capabilities of Wavelength's components to save time and money. The QuickConnect™ software is easily loaded onto your computer with the automated installer, and is compatible with x86 (32-bit) and x64 (64-bit) PCs.

BIG FEATURES IN A SMALL PACKAGE

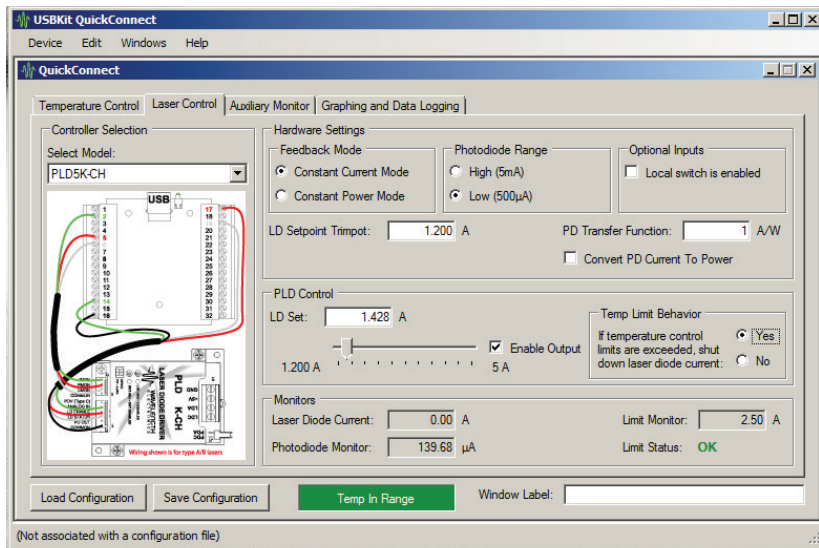
The USBKIT loads many features into one small package, making it a terrific value-add for your laser lab or manufacturing floor.

- The USB board includes D/A for remote setpoint control and A/Ds for monitoring actual temperature or current.
- The software provides control of one laser diode driver, one temperature controller, an auxiliary monitor, and full graphing and datalogging of selected parameters.
- Multiple USBKITS can be attached to the same computer, allowing for control of complex systems.
- Setup configurations can be saved for repeating experiments or manufacturing testing routines.
- The QuickConnect™ software includes on-screen wiring diagrams for the selected Wavelength modules, making set-up a snap.
- Two strip charts graph laser and temperature data as a function of time. Selected data can be continuously logged.

PLUG-IN CONVENIENCE FOR OEMS

Build the USBKIT into your OEM laser system and enjoy the convenience of closed-cover system calibration and troubleshooting—all you need is the USB cable that comes with the USBKIT. The software is built on the Windows .NET framework so you can write your own code for a manufacturing test system, field-calibration kit, or laboratory applications.

USBKIT with QuickConnect™ Software

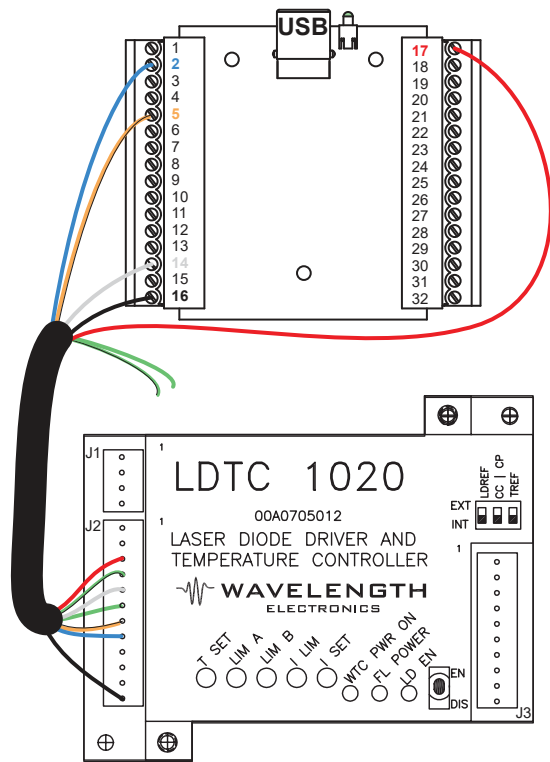


QUICKCONNECT™ FEATURES

The QuickConnect™ software provides full control of a Wavelength Electronics laser driver and temperature controller. The screenshot shows the comprehensive control features of the software, including setpoint controls, monitors, temperature control status, and an on-screen wiring diagram.

WIRING DIAGRAMS FOR QUICK & EASY SETUP

The QuickConnect™ software includes wiring diagrams for all supported modules to make wiring the USBKIT quick and easy. An example wiring diagram (for the LDTC1020 as laser diode driver) is shown below.



LDC PIN	WIRE COLOR	USB ADD-ON PIN
1 - NC		
2 - NC		
3 - LD SHD	Red	17
4 - COMMON	Green & Black	Not Used
5 - EXT LD SET	White	14
6 - COMMON	Green	Not Used
7 - LD P M	Orange & Black	5
8 - LD I M	Blue	2
9 - ACT T M	Red & Black	Not Used
10 - SET T M	White & Black	Not Used
11 - EXT T SET	Orange	Not Used
12 - COMMON	Black	16

USBKIT AND QUICKCONNECT™ SPECIFICATIONS, FUNCTIONS & COMPATIBILITY

PRODUCT FAMILY	PRODUCTS	TEMPERATURE SETPOINT CONTROL	TEMPERATURE CONTROLLER ENABLE	ACTUAL TEMPERATURE MONITOR	TEMPERATURE SETPOINT MONITOR	LASER SETPOINT CONTROL	LASER OUTPUT ENABLE	ACTUAL LASER CURRENT MONITOR	PD CURRENT MONITOR	LASER CURRENT LIMIT MONITOR	LIMIT STATUS
PTC-CH Family	PTC2.5K-CH PTC5K-CH PTC10K-CH	X	X	X	-	-	-	-	-	-	-
PTC PCB Family	PTC5000 PTC10000	X	X	X	-	-	-	-	-	-	-
LDTC 2-2 Family	LDTC 2-2 0 LDTC 2-2 E	X	-	X	X	X	X	X	X	-	-
LDTCxx20 Family	LDTC0520 LDTC1020	X	-	X	X	X	X	X	X	-	-
PLD-CH Family	PLD5K-CH PLD10K-CH PLD12.5K-CH	-	-	-	-	X	X	X	X	X	X
PLD PCB Family	PLD200 + EVAL PLD500 + EVAL PLD1250 + EVAL PLD5000 + EVAL PLD6500 + EVAL	-	-	-	-	X	X	X	X	X	X
PLD10EV	PLD10000 + EVAL PLD12500 + EVAL	-	-	-	-	X	X	X	X	X	X

Other Wavelength products can be interfaced to the USBKIT. Contact the factory for details.

COMPUTER SYSTEM REQUIREMENTS

Operating System Compatibility (US English Edition)	x86 (32-bit)	x64 (64-bit)
Windows 7, 7 SPI, 8.1, and 10	X	X
Installation Prerequisites QuickConnect version 2.3.6 and earlier (Available for free from Microsoft and National Instruments websites.)	.NET Framework 4.0 NI-DAQmx 9.6.x	
Installation Prerequisites QuickConnect version 2.4.0 and later	.NET Framework 4.0 NI-DAQmx 15.1.1f3	
Installation Prerequisites QuickConnect version 2.6.5 and later	NET Framework 4.0 NI-DAQmx 16.0.0f	
Memory	1 GB	2 GB



Additional specifications are available in the product datasheet; download at www.teamwavelength.com/product/usb-interface-for-laser-diode-and-temperature-controllers/

ORDERING INFORMATION

PART NUMBER	DESCRIPTION
USBKIT	USB Interface for Wavelength Laser Diode Drivers and Temperature Controllers

Free, effective, and responsive technical support is available to simplify integration of Wavelength products into your OEM design.

Sales@teamWavelength.com